

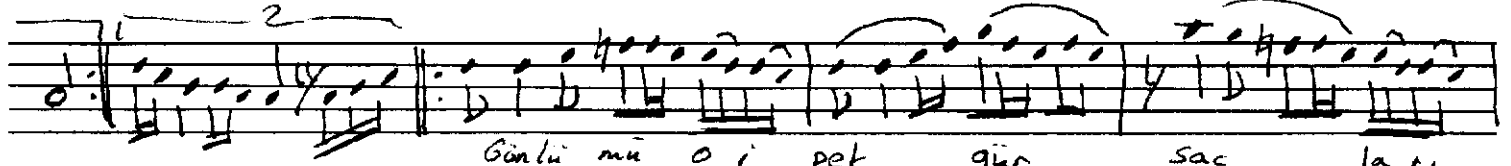
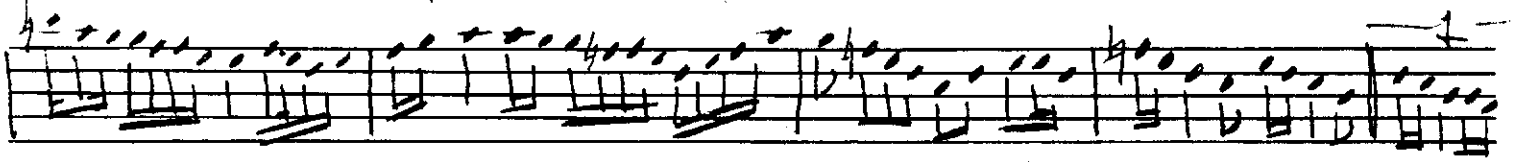
# NİCAR

F. Karahanmudaylı

Öyöl



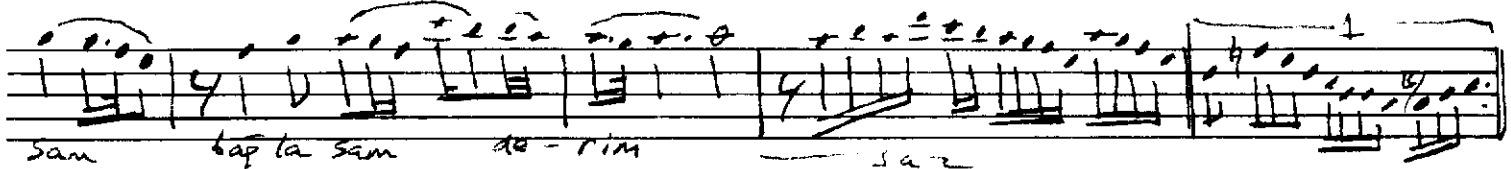
Arançnu



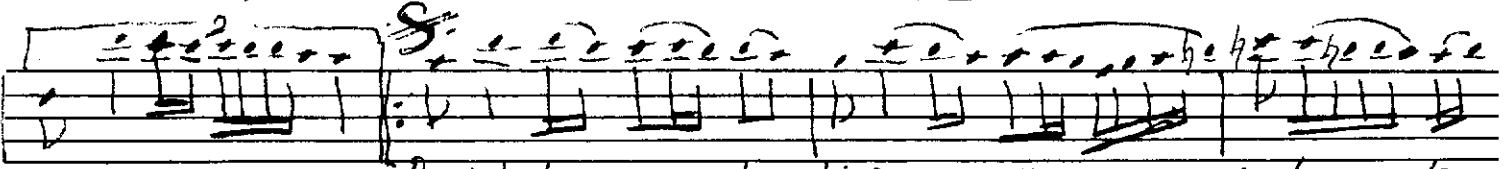
Gönlü mü o i pek gün sac la ri



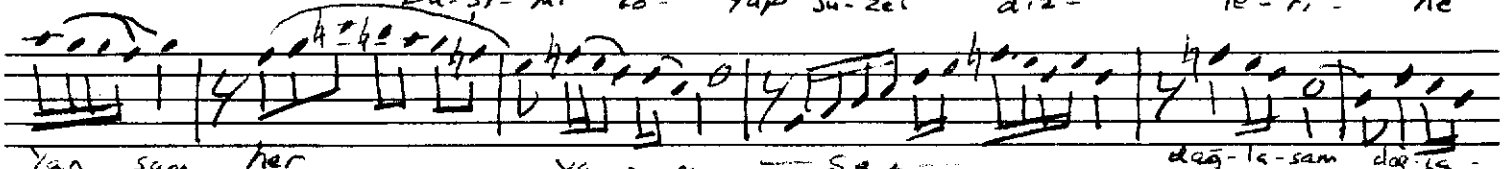
na e lin le sim si ki saz bağ la sam bağ la



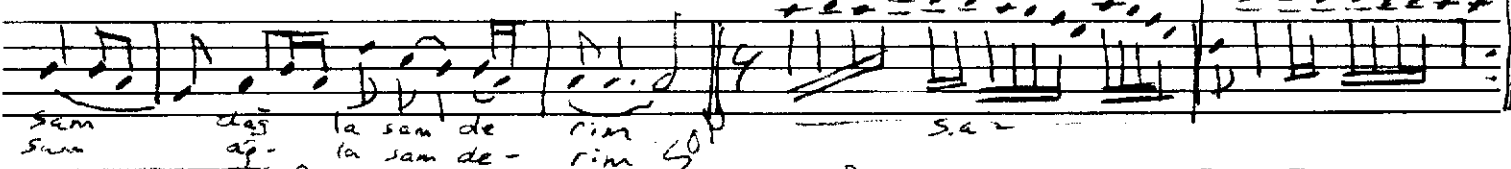
Sam bağ la sam de - rim saz



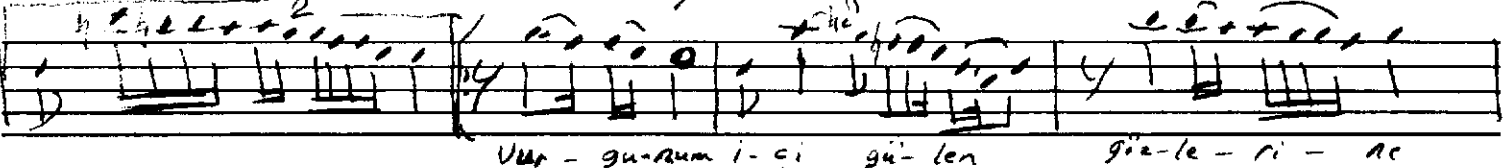
Du dak - la - rin da ki sin - siz a - tes - le  
Ba - sı - mı to - yup sü - zel diz - le - ri - ne



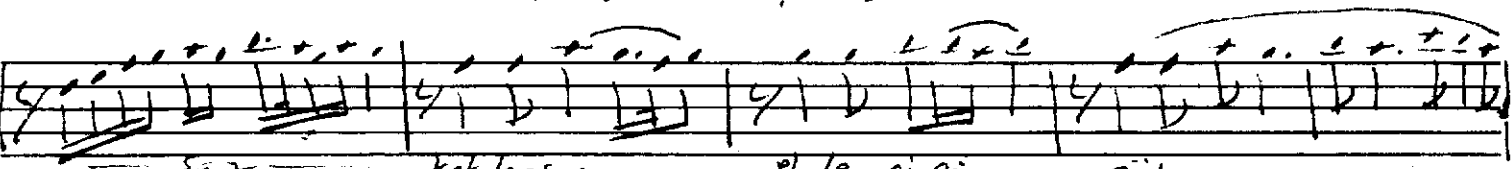
Yan sam her Ya - ni - mi saz bağ la - sam bağ la -  
Yat sam do - ya do - ya bağ la sam bağ la -



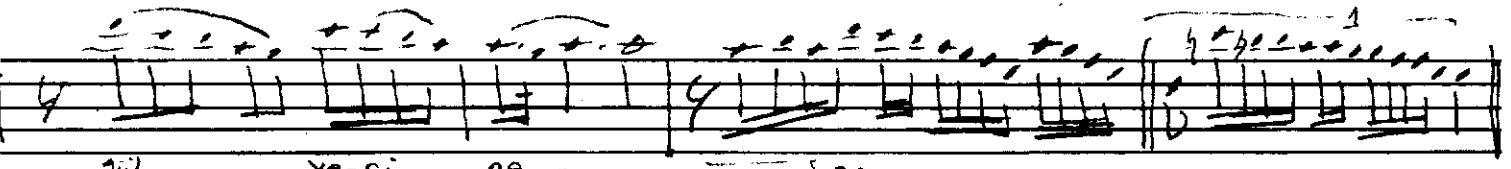
Sam bağ la sam de - rim saz  
Sam bağ la sam de - rim saz



Uur - gu - rum i - ci gü - len gü - le - ri - ne



Saz kök la - sam el le - ri ri Sül



Sül Ye - ri ne - saz

